

- There is a **prayer vigil** each Wednesday at 6:30 here at the church – It's focus is a ceasefire of wars, particularly in Israel/Gaza. It is available via zoom using the same zoom link as for Sundays.

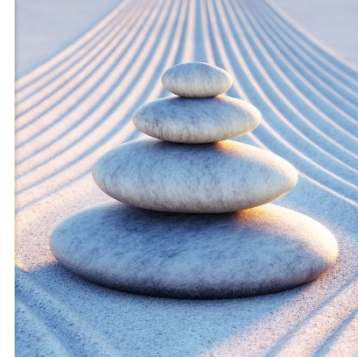
Financial Information and Encouragement

We appreciate and need your ongoing financial support! The meeting asks every member and regular attendee to consider giving, according to one's ability, as a spiritual practice. It is not the size of the donation that matters, but the heart from which it is given. You may drop your tax-deductible gift in the box located at the back corner of our meeting room.

Financial giving is a concrete way in which we ALL can share in the ministry and outreach of Friends. Thank you to all who faithfully contribute! May we continue to trust God to enable us to give with generous and open hearts! Please pledge for 2024. Forms are near the entry table.

July Month Pledged: \$2618
Month Donated: \$5430

YTD Pledged: \$18,326
YTD Given: \$30,585



Zoom link:

<https://us02web.zoom.us/j/85381127592?pwd=Z01JTDFXNlVdzeTZqTUUpwS1dmSFVxZz09>

Klamath Falls Friends Church
Unprogrammed Worship
Sunday, August 4, 2024

10:00 am

All Are Welcome

Because we believe each person represents an image of the Divine and welcome the light that each individual brings, we open our doors to everyone. We encourage full participation by all in the life of our meeting. We recognize one another as equal travelers on the journey, seeking always to celebrate our joys and share our struggles together. May we create and tend an ethic of respect, reverence, safety, and listening. May we delight in our differences!

1918 Oregon Ave., Klamath Falls, OR 97601

To Reach Leigh Tolton, pastor

pastorklamathfallsfriends@gmail.com

541-363-6885

*Sunday, August 4, 2024
Unprogrammed Worship*

Welcome

10:00-10:40 Silent (Unprogrammed) Worship

Joys and Concerns

Closing Prayer

Announcements:

- *Today, August 4 we will be having the sixth and final class of our **book group**, on Thich Nhat Hanh's Living Buddha Living Christ*

Questions are:

1. What do you believe about the afterlife?
 2. Do you believe in an immortal soul separate from the body? What does this mean to you?
 3. What would it mean for you to concentrate on Jesus' teaching rather than his divinity?
 4. How does speaking about God limit our understanding of God?
 5. What is the difference between the Kingdom of God and the afterlife?
 6. How does repeating prayers from our Jewish and Christian tradition enhance your prayer life?
 7. How can you pray while living your life instead of only when you pause?
 8. How does simplicity lead to spiritual growth?
 9. What does it mean for you to rest in God?
 10. How does knowing yourself lead to connection with God?
 11. How has learning about Buddhism helped you connect more deeply with Christianity?
- *Thanks to all of you who contributed to and volunteered for the food pantry. If you have fresh*

veggies in your garden to share, please let Linda know. If you spot a bargain on canned fruit, please pick up a case or two. The Food Pantry still needs volunteers! Call or text Linda Warner (541-281-5535) if you'd like to help feed those in need in our community.

- *August 11, 2024 is our Circle of Friends discussion on "Who are we and What do we want to be? It will be at the end of worship and last one hour. Your participation is very important.*
- *August 25, 2024 is the August Meeting for Worship with Attention to Business. It will take place at the end of meeting for worship.*
- *There will be a hearing on the county proposed Landfill August 27, 2024, 6-8 PM at the Klamath County Fair Grounds. This is a hearing on the proposal for a landfill to be placed in Klamath Marsh in an area of the county designated for Farm Use. The Klamath Tribes have spent millions of dollars working to restore the environmentally important marsh. The hearing to change the designation (allow conditional use other than agricultural and exclusively farm use) of the area has been moved to August 27, 2024, 6-8 PM at the Klamath County Fair Grounds. If the landfill is built in the area of the marsh, the leachate would negatively affect the Williamson River, Upper Klamath Lake, and the Klamath Marsh National Wildlife Refuge. The county commission is looking to make a final decision on the landfill and its placement in the marsh directly after this meeting.*